

Network Documentation & Netdot

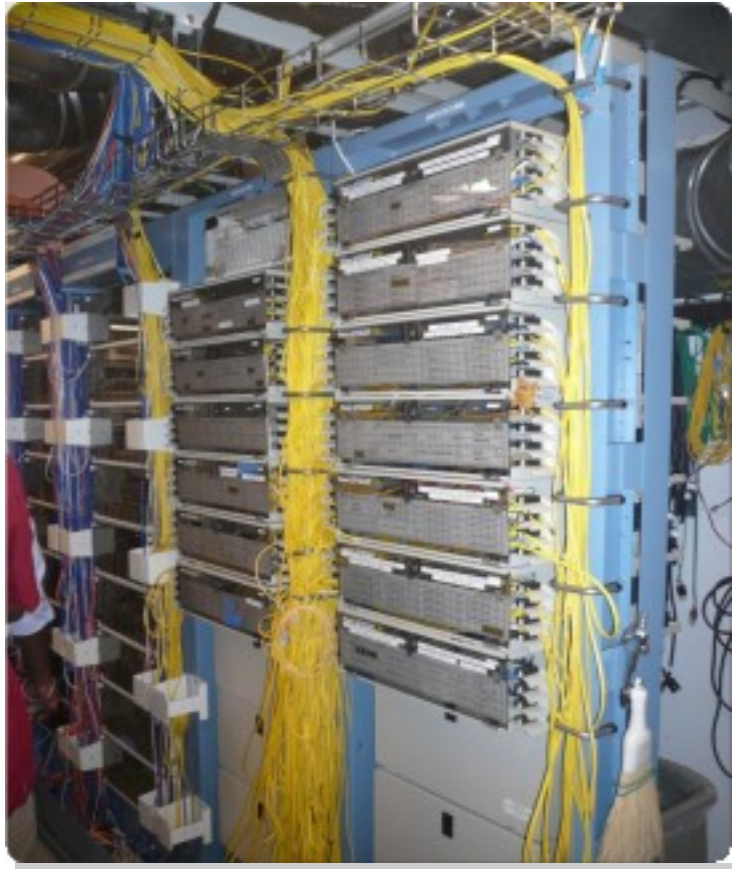
Attribution

Based on materials from several presentations authored by:

- Carlos Vicente
University of Oregon Network Services
Principal author of Netdot
- Hervey Allen
Network Startup Resource Center
- Dale Smith
University of Oregon Network Services

Documentation

Have you ever asked, “*How do you keep track of it all?*”



Document,
Document,
Document!

Documentation

Basics, such as documenting your switches...

- What is each port connected to?
- Can be simple text file with one line for every port in a switch:
 - health-switch1, port 1, Room 29 – Director's office
 - health-switch1, port 2, Room 43 – Receptionist
 - health-switch1, port 3, Room 100 – Classroom
 - health-switch1, port 4, Room 105 – Professors Office
 -
 - health-switch1, port 25, uplink to health-backbone
- This information might be available to your network staff, help desk staff, via a wiki, software interface, etc.
- Remember to label your ports!

Documentation: Labelling

Nice... 😊



Problems With Documentation

In most cases:

- Lack of clear procedures and methods
- Dispersion
- Lack of structure
- Lack of correlation
- Lack of tools... or, too many tools
- Lack of time and human resources

Requirements for a Tool

- Open standards based
- Generic and flexible
- That uses a relational database
- Automates tasks
- Exports configurations
- Web and command-line interfaces (CLI)
- Authentication and authorization
- Reports
- Open source code
- Application programming interface (API)

{net.} NETwork DOcumentation Tool

- Started in 2002. Required by the University of Oregon Network Services and NERO (<http://www.nero.net>)
- Nothing equivalent available as Open Source
- Started as something much simpler
- Centralizing and correlating information is critical:
 - Topology
 - Cable plant
 - IP and Mac addresses
 - DNS, DHCP, etc.

{net.} NETwork DOcumentation Tool

Include functionality of other network documenation tools such as IPplan and Netdisco.

Core functionality includes:

- Discovery of network interfaces via SNMP
- Layer 2 topology discovery and graphics using:
 - CDP/LLDP
 - Spanning Tree protocol
 - Switches forwarding tables
 - Router point-to-point subnets
- IPv4 and IPv6 address management (IPAM)
 - Address space visualization
 - DNS and DHCP configuration managment
 - IP and Mac address correlation

{net.} NETwork DOcumentation Tool

Functionality cont.

- Cable plants (sites, fibre, copper, closes, circuits)
- Contacts (departments, providers, vendors, etc.)
- Exports for tools like Nagios, Sysmon, RANCID, Cacti, etc.
 - For example, automate Cacti configuration
 - I.E., how to automate node creation in Cacti
- User access-level: admin, operator, user
- Ability to draw pretty pictures of your network.

The screenshot displays the web interface of the {net.} NETwork DOcumentation Tool. At the top, there is a navigation bar with tabs: Management, Contacts, Cable Plant, Advanced, Reports, Export, and Help. Below this is a secondary bar with tabs: Devices, VLANs, Address Space, DNS Records, DNS Zones, and DHCP. The main content area is titled 'Device Tasks' and includes a '[new] [hide]' link. Under 'Device Tasks', there is a 'Find Devices' section with a text input field labeled 'Name/IP/MAC:' and a 'search' button. At the bottom of the interface, a footer line reads '© GPL. Netdot: NETwork DOcumentation Tool v.0.9'.

{net.} Components

SNMP::Info <http://snmp-info.sourceforge.net/>

HTML::Mason <http://www.masonhq.com/>

Class::DBI <http://search.cpan.org/~tmtm/Class-DBI/lib/Class/DBI.pm>

Apache2::SiteControl

<http://search.cpan.org/~awkay/Apache2-SiteControl-1.03/lib/Apache2/SiteControl.pm>

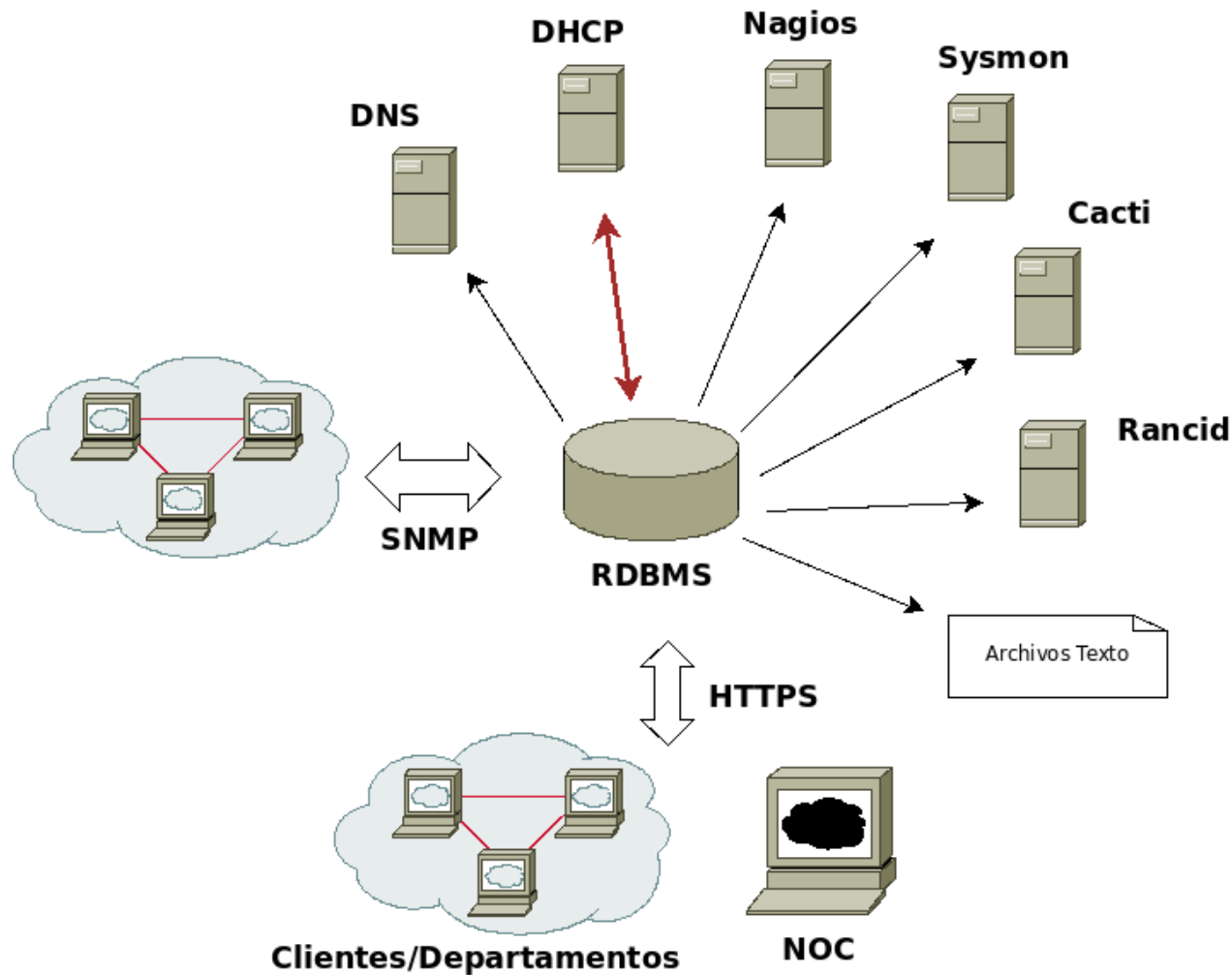
NetAddr::IP <http://search.cpan.org/dist/NetAddr-IP/IP.pm>

DBI <http://dbi.perl.org/>

<http://search.cpan.org/~timb/DBI/DBI.pm>

MySQL <http://dev.mysql.com/doc/refman/5.1/en/>

{net.} NETwork DOcumentation Tool



Network Devices

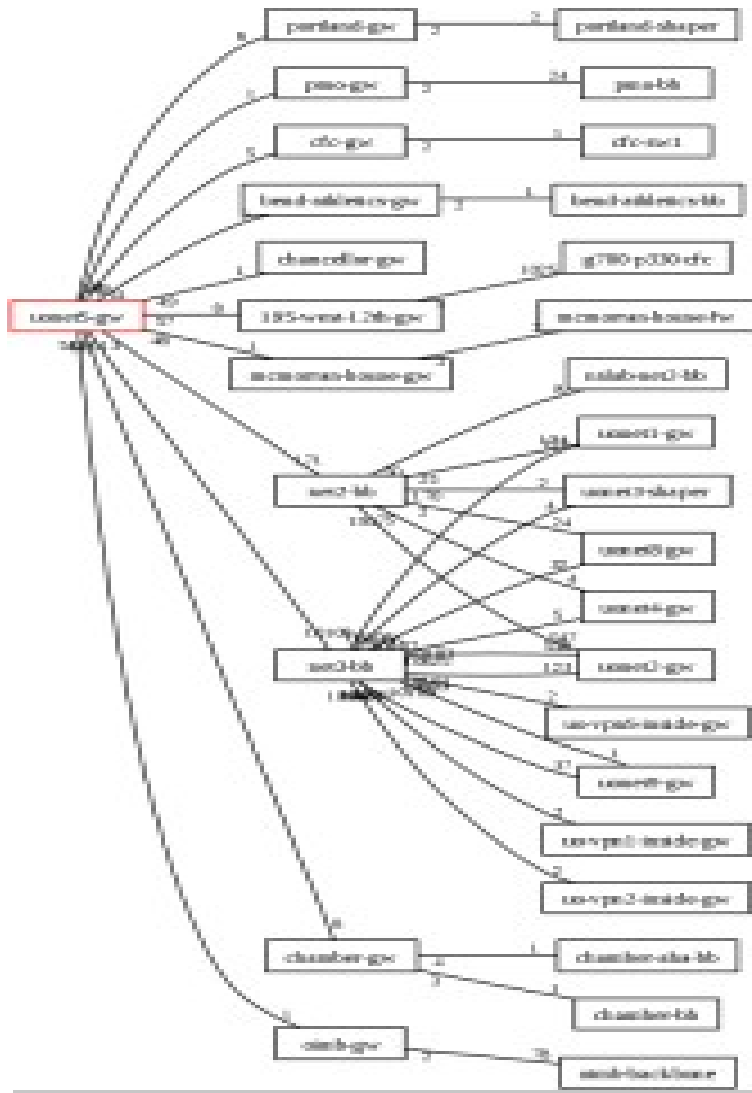
- Can be added via SNMP (preferred) or manually
- Automatic updates via SNMP
- Manufacturer, model, software version, name and domain, dates
- Maintenance contracts, out of band access, SNMP version and community
- Interfaces, VLANs, IP addresses, BGP peers
 - ARP tables (routers), redirection tables (switches)
- Topology
- Images, comments, change history

{net.} Topology

{net.} uses many sources of topological information:

- CDP and LLDP protocols
- Spanning Tree protocol
- Point-to-point networks

Topology: Example

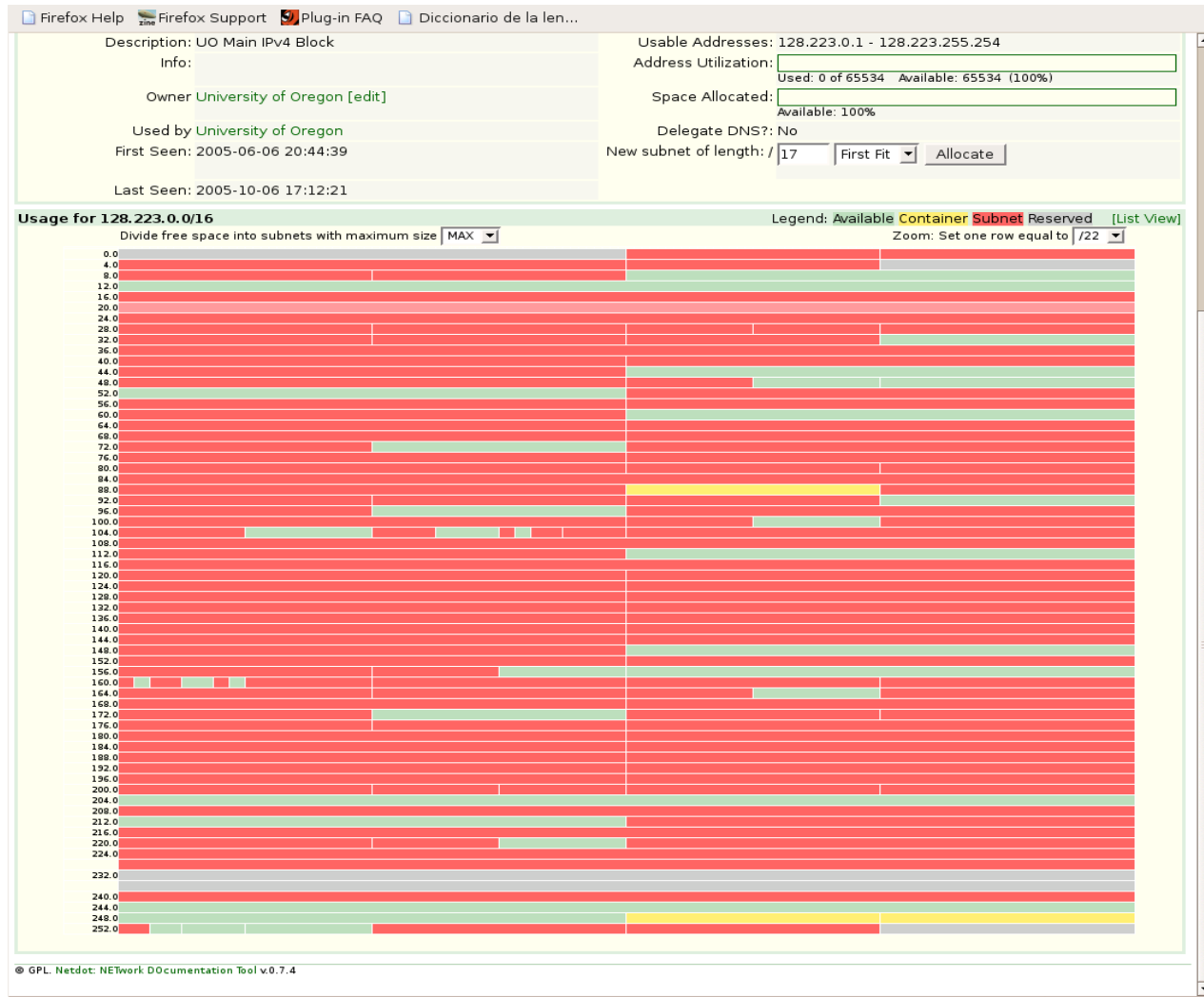


Netdot can dynamically draw the topology of a network or a segment of a network.

IP Space: Addresses and Blocks

- Hierarchical (*drill-down*) and graphical representation
- Support for IPv4 and IPv6
- Classification in:
 - Block
 - Container
 - Subnet
 - Reserved
 - Address
 - Static
 - Dynamic
 - Reserved

Visualisation of IP Address Space



IP Space: Blocks & Addresses

- Subnets are discovered from router interfaces
- From ARP tables we can know:
 - Addresses in use in each subnet
 - Mapping of IP to MAC
- Information added for blocks (or subnets)
 - Group that uses the block
 - Group that administers the block
 - Percent utilization of addresses (subnet)
 - Percent utilization of sub-divisions (containers)
- Information added for addresses
 - First and last time seen
 - interface and device
 - Services to monitor with Nagios (HTTP, DNS, SSH, DHCP, Radius, LDAP, etc.)

Reports

- Devices
 - By category and by product
 - Out-of-date firmware
 - Duplex mismatches
- Most used MAC codes (Manufacturers)
- From the database
 - SQL table utilization reports

Inventory & Devices

Firefox Help Firefox Support Plug-in FAQ Diccionario de la len...

{net.} NETWORK Documentation Tool search:
 user: cvicente [logout]

nsdb.uoregon.edu Tue Jun 13 14:42:04 2006

Management Operations Cable Plant Generic **Reports** Help

Device Inventory Custom Reports Database Reports

Device Inventory	Product	Count
Type		
Total Devices in Inventory:		1369
Access Point		319
	Aironet 1200 (IOS)	317
	Cisco 350 Series Bridge	2
Authentication Gateway		5
	UO Authentication Gateway	5
Console Server		8
	Cyclades Alterpath ACS48	3
	Cyclades TS	5
DSL Modem		34
	PairGain Campus-REX	34
Firewall		23
	ASA 5510 Adaptive Security Appliance	2
	Cisco PIX Firewall	4
	Linux Firewall	3
	Netscreen 214	1
	Netscreen SGT-AV	1
	Netscreen SXP	1
	Netscreen SXT	2
	Netscreen ISG 1000	2
	Netscreen-25	4
	Netscreen-50	1
	PIX 515E Firewall Appliance	1
	Sonicwall	1
Hub		269
	Advantestack 10Base-T Hub	244
	HP 10Base-T Hub-12M	4
	HP AdvanceStack 10BT Switching Hub	21
IP Phone		6
	Avaya IP Phone 4606	1
	Avaya IP Phone 4612	1
	Avaya IP Phone 4624	4
NAS		0
PDU		2
	APC PDU	2
Packet Shaper		2
	Packeteer PacketShaper 4500	1
	Packeteer PacketShaper 8500	1
Print Server		0
Router		48
	Cisco 12008/GRP	2
	Cisco 1760	5
	Cisco 2511 (1)	1

Configuration Exports

Information contained within Netdot enables automatic generation of configurations for software packages.

- Monitoring devices and services
 - Nagios, Sysmon
- Monitoring configurations
 - RANCID
- Traffic analysis
 - Cacti
- Services
 - DNS (Bind)
 - DHCP

IP Plan

From the IPplan web page:

“IPplan is a free (GPL), web based, multilingual, TCP IP address management (IPAM) software and tracking tool written in php 4, simplifying the administration of your IP address space. IPplan goes beyond TCPIP address management including DNS administration, configuration file management, circuit management (customizable via templates) and storing of hardware information (customizable via templates).”

Lots of screenshots:

<http://iptrack.sourceforge.net/doku.php?id=screenshots>

NetDisco

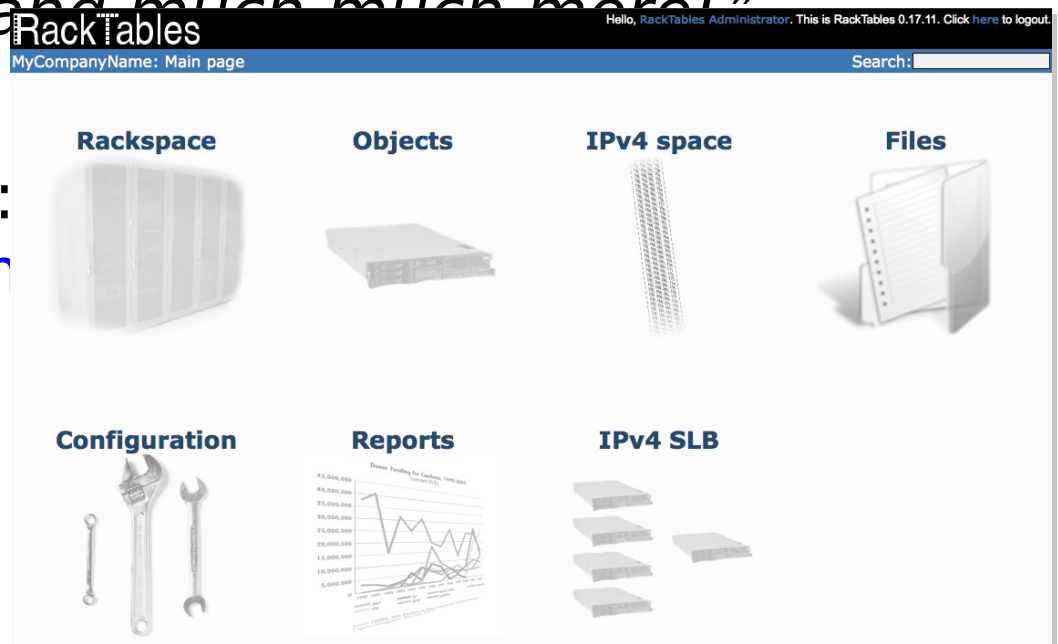
- Launched 2003. 1.0 released October 2009.
- Some popular uses of Netdisco:
 - **Locate** a machine on the network by MAC or IP and show the switch port it lives at.
 - **Turn Off** a switch port while leaving an audit trail. Admins log why a port was shut down.
 - **Inventory** your network hardware by model, vendor, switch-card, firmware and operating system.
 - **Report** IP address & switch port usage: historical & current.
 - **Pretty pictures** of your network.

RackTables

Web site: <http://racktables.org/>

“ Racktables is a nifty and robust solution for datacenter and server room asset management. It helps document hardware assets, network addresses, space in racks, networks configuration and much much more!”

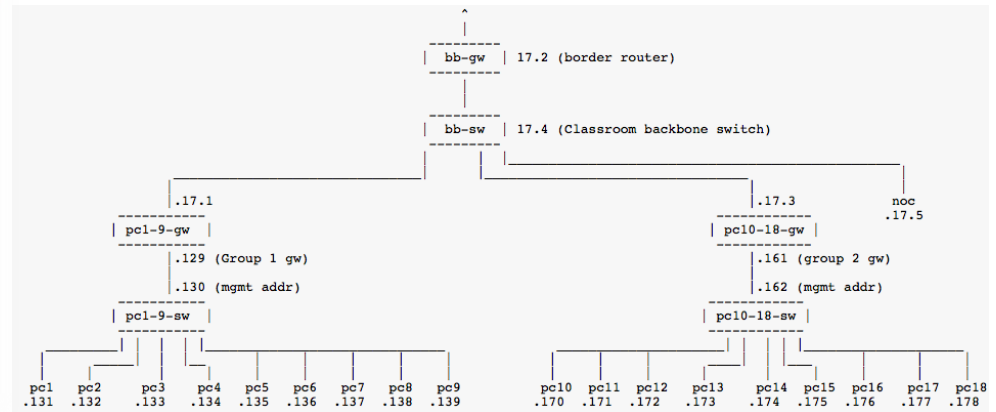
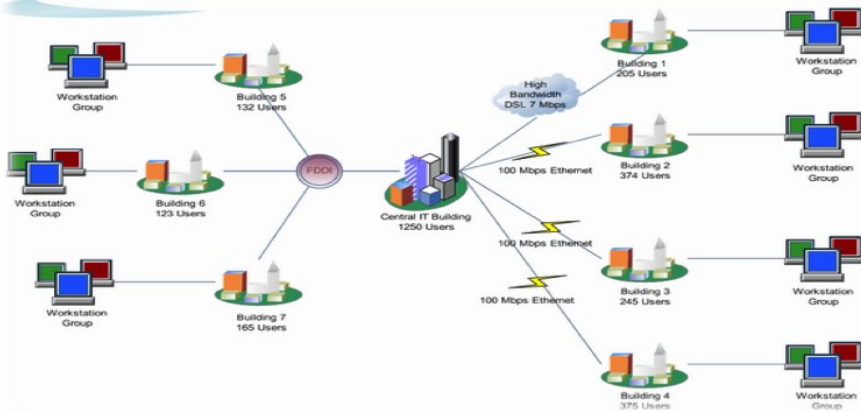
There is a demo system:
<http://racktables.org/demo>



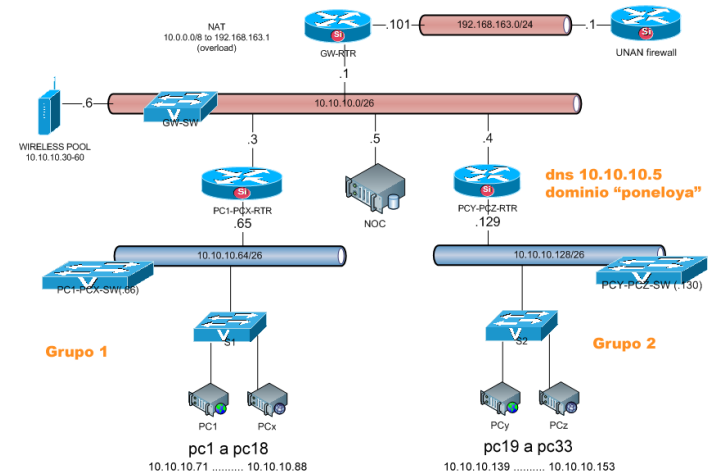
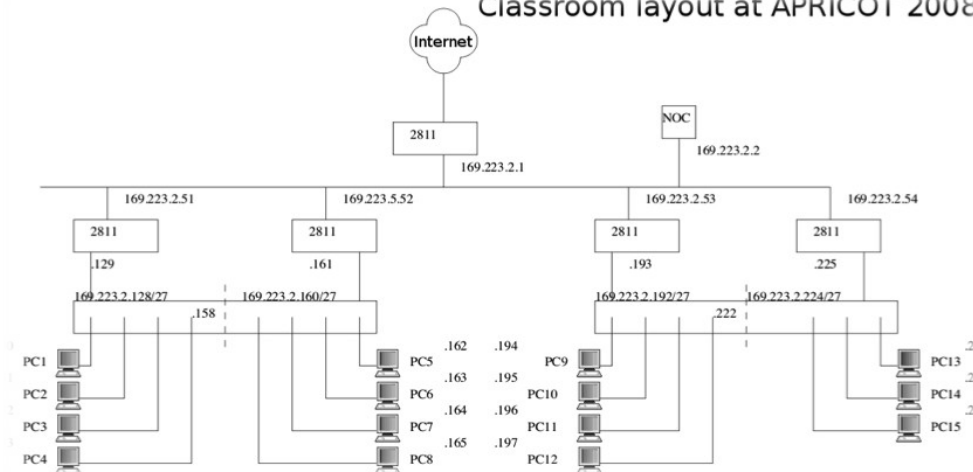
Documentation: Diagrams

Campus Executive Overview Guideline

Sunday, Jan. 1, 2006



Classroom layout at APRICOT 2008



Diagramming Software

Windows

- Visio: <http://office.microsoft.com/en-us/visio/>
- Ezdraw: <http://www.edrawsoft.com/>

Mac

- Omnigraffle: <https://www.omnigroup.com/omnigraffle>

Open Source

- LibreOffice Draw
- Pencil: <http://pencil.evolus.vn/>
- Dia: <http://live.gnome.org/Dia>
- ASCII: <http://www.ascii-art.org/>

Diagramming Software

Web based

- Google Docs drawings
- Gliffy: <https://www.gliffy.com/>
- Beware some charge for storage or team sharing features

Icons

- Cisco icons: <http://www.cisco.com/web/about/ac50/ac47/2.html>
- For LibreOffice:
<http://www.vrt.com.au/downloads/vrt-network-equipment>
- Nagios Exchange: <http://www.nagiosexchange.org/>

{net.} Demo

Assuming there is time we will now give a short demonstration of a running copy of Netdot

Netdot can be found at:

<http://netdot.uoregon.edu/>