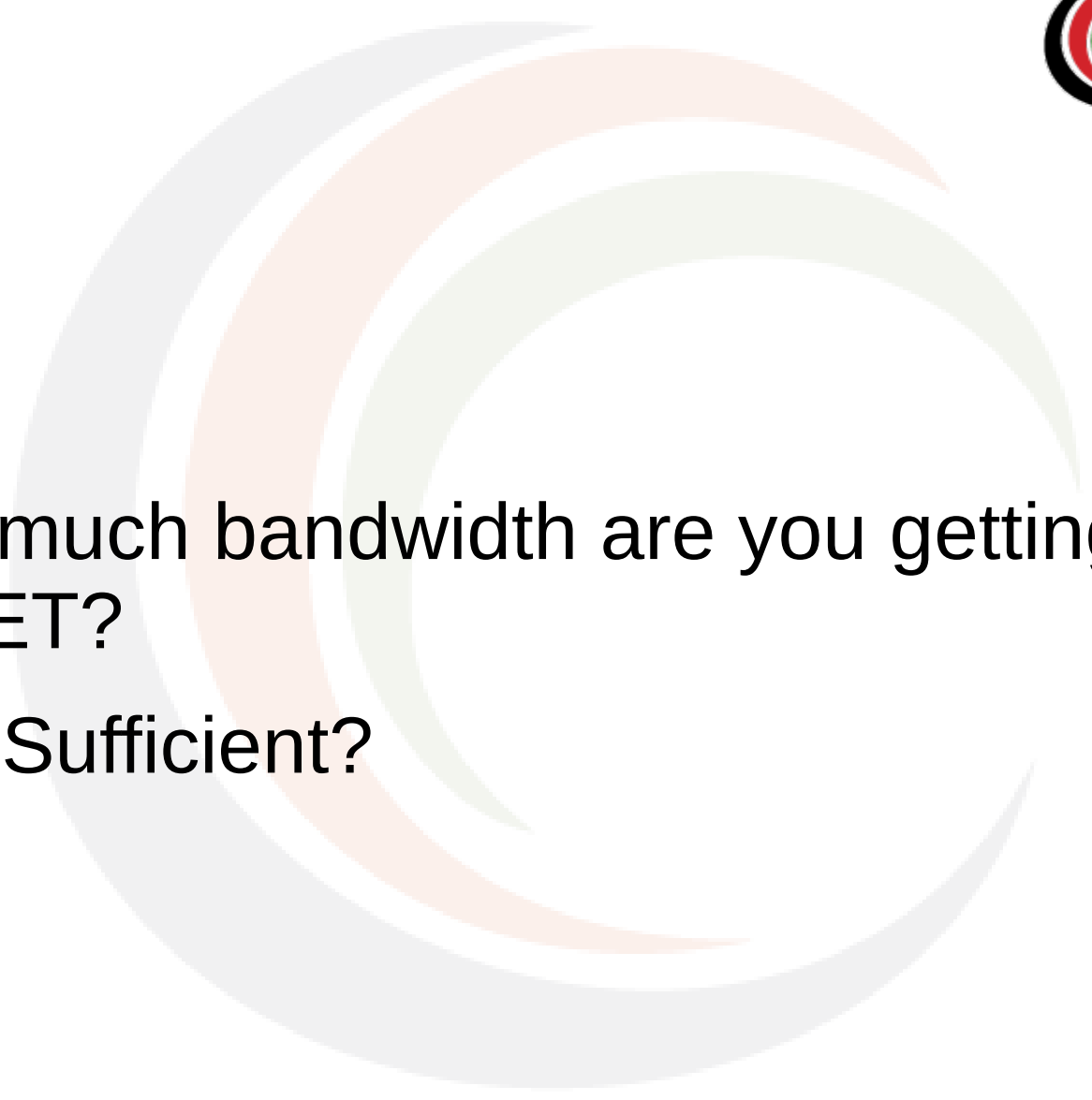
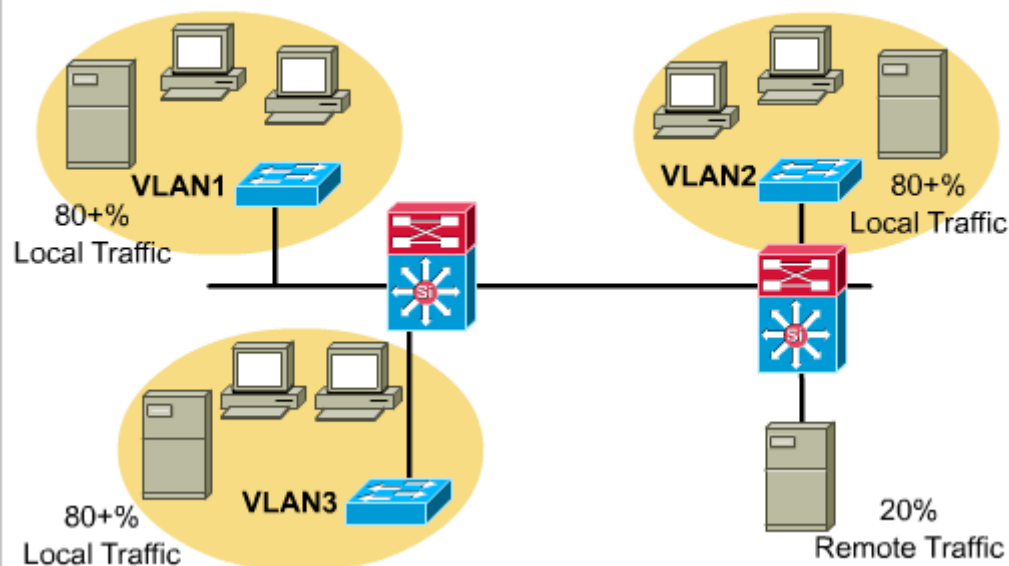


# The Bandwidth Challenge

- 
- A large, decorative graphic in the background consists of three concentric, semi-transparent arcs in light grey, light orange, and light green, creating a circular, tunnel-like effect.
- How much bandwidth are you getting from KENET?
  - Is it Sufficient?

## The 80/20 Rule



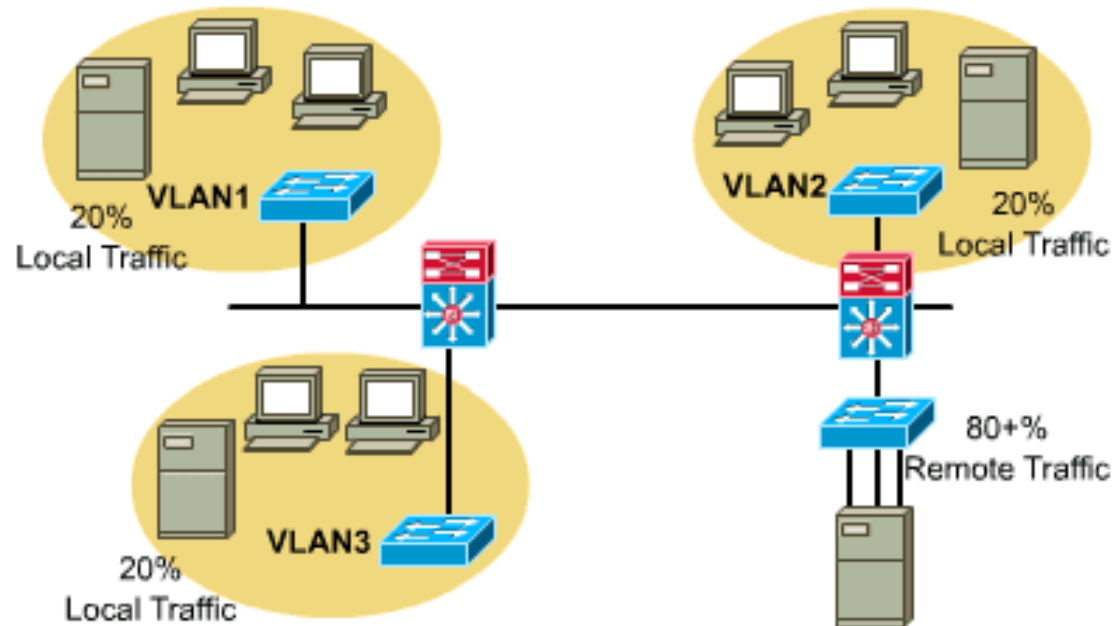
Traditional 80/20 rule

80% traffic local to subnet, 20% remote

“Remote” traffic

Traffic across the backbone or core to enterprise servers, Internet, remote sites, other subnets (more coming)

# The New 20/80 Rule



New 20/80 rule

20% traffic local to subnet, 80% remote

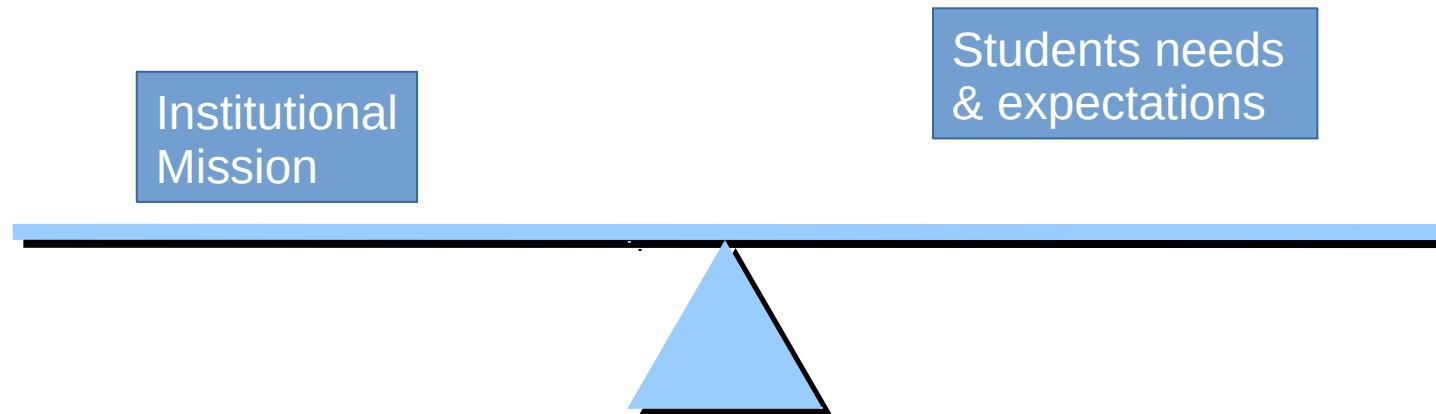
Traffic moving towards new 20/80 rule due to:

Web based computing

Servers consolidation of enterprise and workgroup servers into centralized server farms, security and ease of management

# A balancing Act

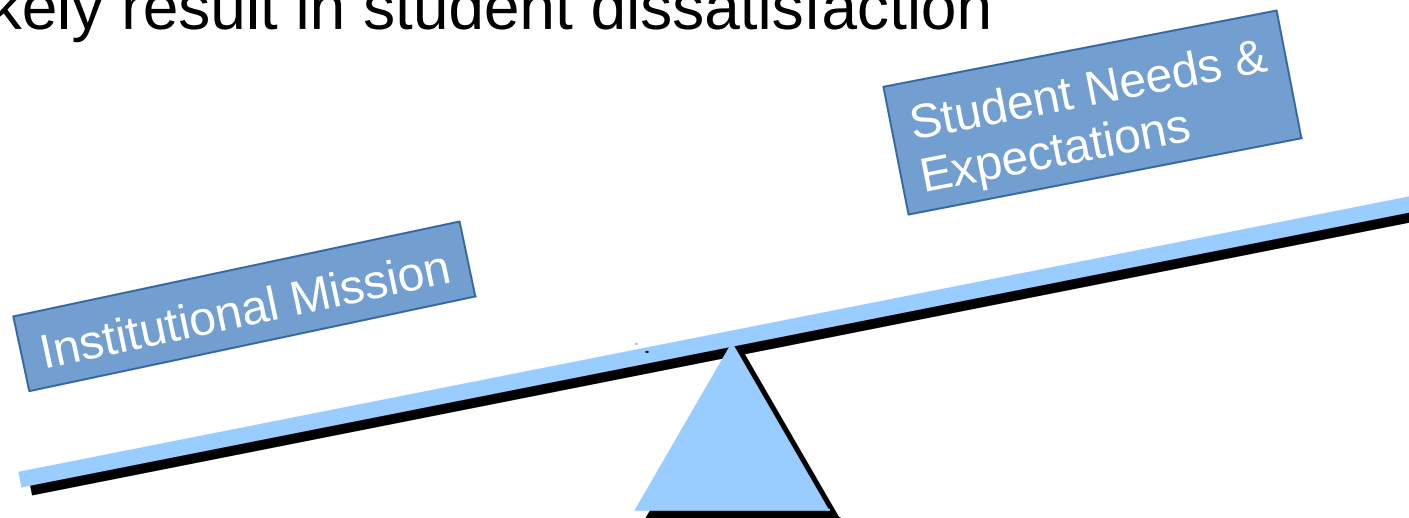
Striking a fine balance is key for institutional CIOs



Ref Kurt A. Snodgrass

# A Balancing Act for Higher Ed

- Overly tight controls limit access to technologies and information
- Curbs innovation in teaching and learning
- Will likely result in student dissatisfaction



Ref Kurt A. Snodgrass

# Challenges

- Funding
- Upgrading and Maintaining Infrastructure
- Managing on campus Bandwidth
- ?

# What are the students accessing?

- YouTube videos
- Streaming Movies
- Email
- P2P file sharing
- Social Networking

*Students and staff have more than one wireless device*



# What services are you offering on campus?

- Distance Learning
  - Synchronous (2-way interactive)
  - Asynchronous (Web-based)
- Wireless
  - Anytime, anywhere access
- Mobile computing and communications
- Bandwidth Management
  - Peer-to-Peer (P2P)
  - Music and movie downloads

*Transforming education  
through ICT*

# Thank You

**[www.kenet.or.ke](http://www.kenet.or.ke)**

Jomo Kenyatta Memorial  
Library, University of Nairobi  
P. O Box 30244-00100, Nairobi.  
0732 150 500 / 0703 044 500